



Cogan
Since 1901



Mezzanines
Increase Floor Space

cogan.com

FLOORING

CORRUGATED DECKING

Description

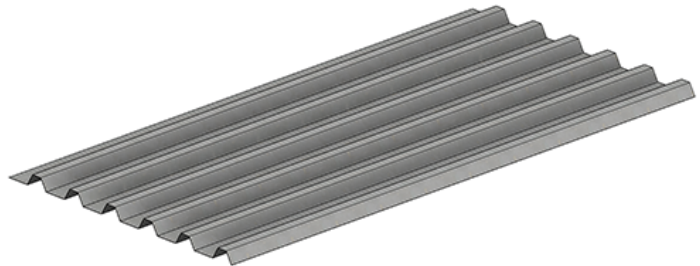
Cogan corrugated decking is a steel underlay used to reinforce resin board and concrete flooring. Complete with a galvanized top side and white underside, corrugated steel decking is available in three different gauges for your convenience.



PRODUCT INFORMATION

Specifications

| | |
|----------------|--|
| Gauges | 18GA, 20GA, 22GA |
| Decking Width | 3'-0" |
| Decking Length | 4'-0", 8'-0", 9'-0", 10'-0", 11'-0", 12'-0", 13'-0", 14'-0", 15'-0", 16'-0" |
| Finish | Galvanized, white underside |
| Application | Flooring |



COLORS



White

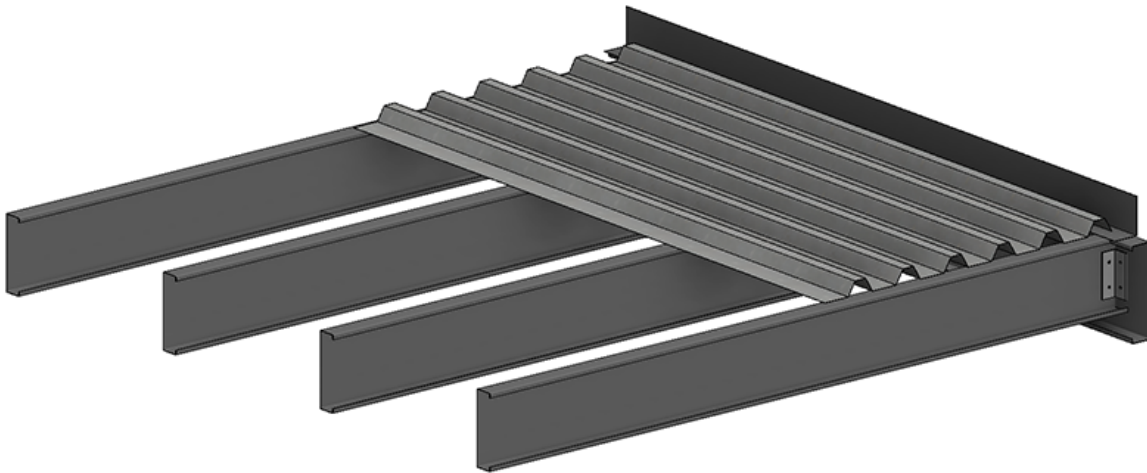


Electro-Galvanized



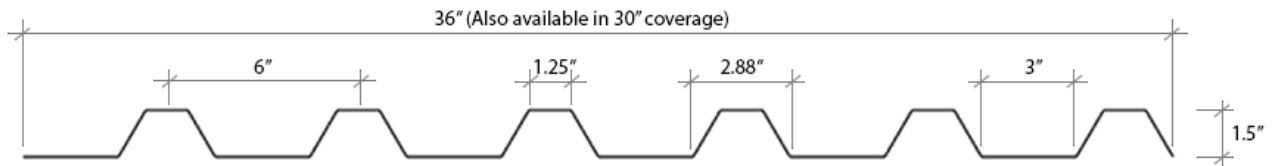
DETAILS

Please consult the tables below for further information regarding properties and load capacity.



| Gauge | Size | ITEM# | Gauge | Size | ITEM# | Gauge | Size | ITEM# |
|-------|----------|---------|-------|----------|---------|-------|----------|---------|
| 18ga | 3' x 4' | SD1834 | 20ga | 3' x 4' | SD2034 | 22ga | 3' x 4' | SD2234 |
| 18ga | 3' x 8' | SD1838 | 20ga | 3' x 8' | SD2038 | 22ga | 3' x 8' | SD2238 |
| 18ga | 3' x 9' | SD1839 | 20ga | 3' x 9' | SD2039 | 22ga | 3' x 9' | SD2239 |
| 18ga | 3' x 10' | SD18310 | 20ga | 3' x 10' | SD20310 | 22ga | 3' x 10' | SD22310 |
| 18ga | 3' x 11' | SD18311 | 20ga | 3' x 11' | SD20311 | 22ga | 3' x 11' | SD22311 |
| 18ga | 3' x 12' | SD18312 | 20ga | 3' x 12' | SD20312 | 22ga | 3' x 12' | SD22312 |
| 18ga | 3' x 13' | SD18313 | 20ga | 3' x 13' | SD20313 | 22ga | 3' x 13' | SD22313 |
| 18ga | 3' x 14' | SD18314 | 20ga | 3' x 14' | SD20314 | 22ga | 3' x 14' | SD22314 |
| 18ga | 3' x 15' | SD18315 | 20ga | 3' x 15' | SD20315 | 22ga | 3' x 15' | SD22315 |
| 18ga | 3' x 16' | SD18316 | 20ga | 3' x 16' | SD20316 | 22ga | 3' x 16' | SD22316 |

CORRUGATED DECKING SIDEVIEW





DETAILS

Please consult the tables below for further information regarding properties and load capacity.

| Section Properties | | (Per Foot of Width) | | | | | | | |
|-------------------------------|---------------------|-----------------------|-----------------------------|----------------------------|---|-----------------------------------|---------|--------------|--------------|
| Base Steel Thickness (in.) | Weight G90 (psf) | Yield Stress (ksi) | Section Modulus | | Deflection Moment of Inertia Mid Span (in ⁴) | Specified Web Crippling Data (lb) | | | |
| | | | Mid Span (in ³) | Support (in ³) | | End Pe1 | End Pe2 | Interior Pit | Interior Pi2 |
| 0.018 | 1.04 | 33 | 0.0940 | 0.0888 | 0.0985 | 54.1 | 13.5 | 105 | 17.9 |
| 0.024 | 1.36 | 33 | 0.136 | 0.127 | 0.132 | 102 | 25.5 | 197 | 33.4 |
| 0.030 | 1.69 | 33 | 0.175 | 0.162 | 0.165 | 165 | 41.3 | 318 | 54.1 |
| 0.036 | 2.02 | 33 | 0.208 | 0.198 | 0.197 | 244 | 61.1 | 470 | 79.8 |

Live Load Factor = 1.5; Importance Factor = 0.90; Importance Category = 1.0

| Load Table | | Maximum Specified Uniformly Distributed Loads in psf | | | | | | | | | | | |
|------------|---|--|-------|-------|-------|-----------------------------------|-------|-------|-------|-----------------------------------|-------|-------|-------|
| Span (in.) | | 1-Span Base Steel Thickness (in.) | | | | 2-Span Base Steel Thickness (in.) | | | | 3-Span Base Steel Thickness (in.) | | | |
| | | 0.018 | 0.024 | 0.030 | 0.036 | 0.018 | 0.024 | 0.030 | 0.036 | 0.018 | 0.024 | 0.030 | 0.036 |
| 48 | S | 78 | 112 | 144 | 172 | 73 | 105 | 134 | 164 | 92 | 131 | 167 | 205 |
| | D | 149 | 200 | 250 | 299 | 358 | 480 | 599 | 717 | 282 | 378 | 472 | 565 |
| 54 | S | 61 | 88 | 114 | 136 | 58 | 83 | 106 | 129 | 72 | 103 | 132 | 162 |
| | D | 105 | 140 | 175 | 210 | 251 | 337 | 421 | 504 | 198 | 266 | 331 | 397 |
| 60 | S | 50 | 72 | 92 | 110 | 47 | 67 | 86 | 105 | 59 | 84 | 107 | 131 |
| | D | 76 | 102 | 128 | 153 | 183 | 246 | 307 | 367 | 144 | 194 | 241 | 289 |
| 66 | S | 41 | 59 | 76 | 91 | 39 | 55 | 71 | 87 | 48 | 69 | 89 | 108 |
| | D | 57 | 77 | 96 | 115 | 138 | 185 | 230 | 276 | 108 | 145 | 181 | 217 |
| 72 | S | 34 | 50 | 64 | 76 | 33 | 47 | 60 | 73 | 41 | 58 | 74 | 91 |
| | D | 44 | 59 | 74 | 89 | 106 | 142 | 177 | 213 | 84 | 112 | 140 | 167 |
| 78 | S | 29 | 42 | 55 | 65 | 28 | 40 | 51 | 62 | 35 | 50 | 63 | 77 |
| | D | 35 | 47 | 58 | 70 | 83 | 112 | 140 | 167 | 66 | 88 | 110 | 132 |
| 84 | S | 25 | 37 | 47 | 56 | 24 | 34 | 44 | 53 | 30 | 43 | 55 | 67 |
| | D | 28 | 37 | 47 | 56 | 67 | 90 | 112 | 134 | 53 | 71 | 88 | 105 |
| 90 | S | 22 | 32 | 41 | 49 | 21 | 30 | 38 | 47 | 26 | 37 | 48 | 58 |
| | D | 23 | 30 | 38 | 45 | 54 | 73 | 91 | 109 | 43 | 57 | 72 | 86 |
| 96 | S | 19 | 28 | 36 | 43 | 18 | 26 | 33 | 41 | 23 | 33 | 42 | 51 |
| | D | 19 | 25 | 31 | 37 | 45 | 60 | 75 | 90 | 35 | 47 | 59 | 71 |
| 102 | S | 17 | 25 | 32 | 38 | 16 | 23 | 30 | 36 | 20 | 29 | 37 | 45 |
| | D | 16 | 21 | 26 | 31 | 37 | 50 | 62 | 75 | 29 | 39 | 49 | 59 |
| 108 | S | 15 | 22 | 28 | 34 | 14 | 21 | 26 | 32 | 18 | 26 | 33 | 40 |
| | D | 13 | 18 | 22 | 26 | 31 | 42 | 53 | 63 | 25 | 33 | 41 | 50 |

Notes:

1. Steels conforms to ASTM A653.
2. Section properties are in accordance with CSA-S136-07.
3. Values in row "S" are based on strength.
4. Values in row "D" are based on a deflection limit of 1/180 of the span.
5. Web crippling not included in strength values.
6. Contact the sales department for stocked colours and gauges.
7. The load table contained on this data sheet was prepared by Dr. R.M. Schuster P.Eng. Professor Emeritus of Structural Engineering, University Waterloo, Ontario, Canada.